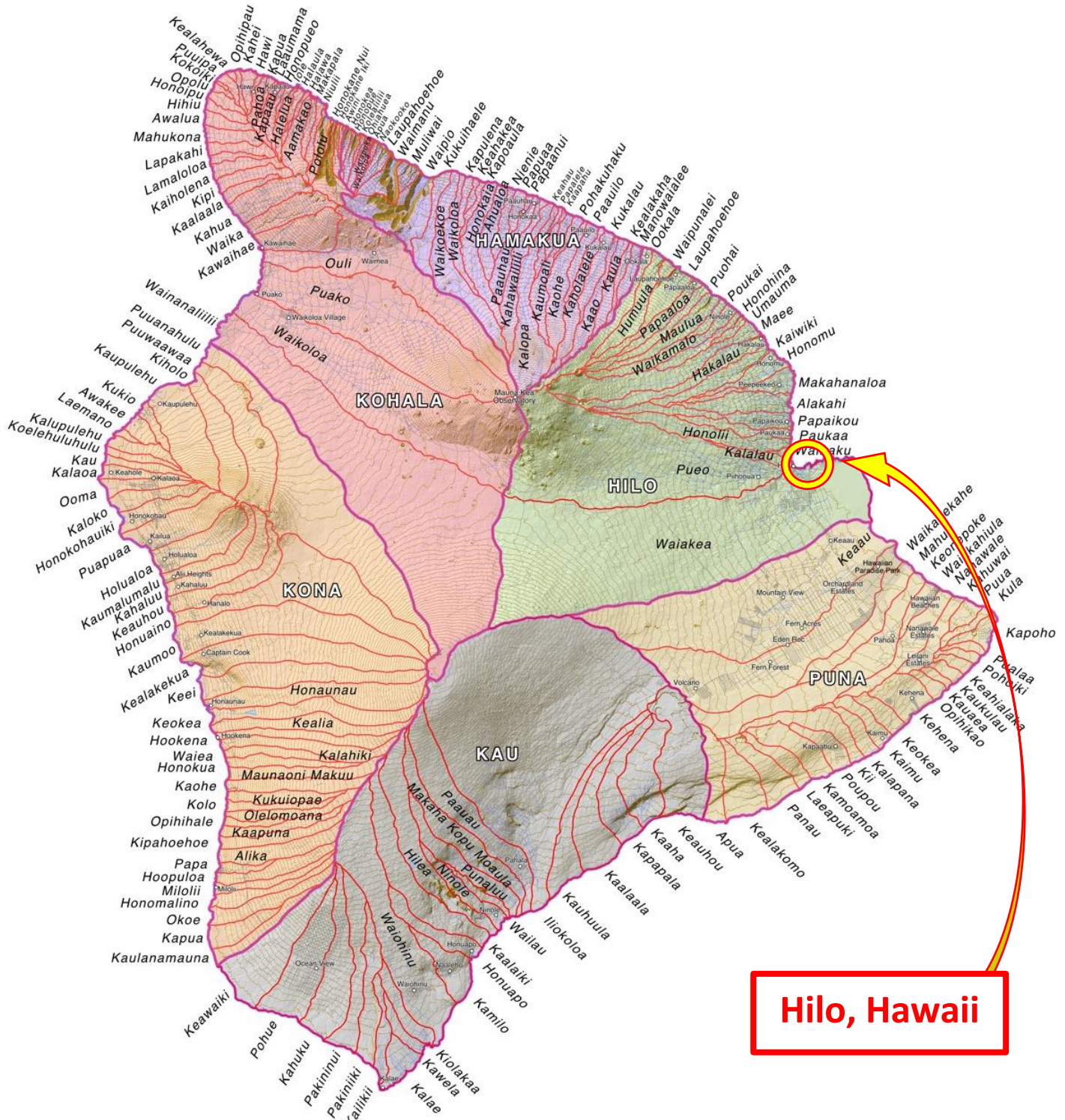
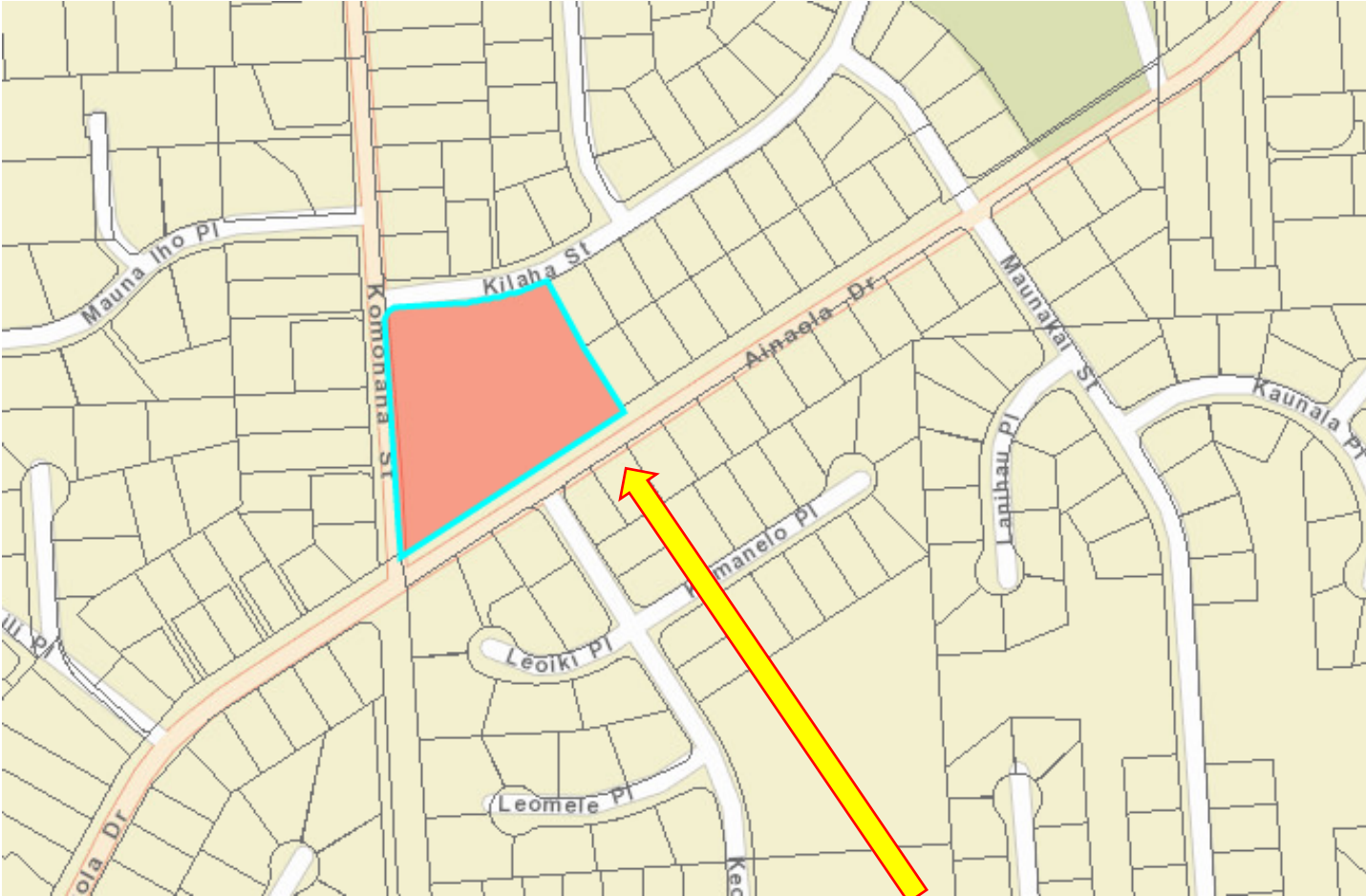


**EXHIBIT A**



**Hilo, Hawaii**

**EXHIBIT A**



**Corner of Komohana and Ainaola Streets  
Waiakea, TMK: (3) 2-4-41:45**

**EXHIBIT A**



**2-mango trees, unconfined drainage ditch, and drainage channel.**

**EXHIBIT A**



**From Northeast corner looking Southwest.**

**EXHIBIT A**



**Eastern boarder looking North to South from Kilaha St.**

**EXHIBIT A**



**Northeast corner looking West along Kilaha St.**

**EXHIBIT A**



**Unconfined drainage ditch at Southwest corner of property**

**EXHIBIT A**



Failing wall section of drainage channel.

Unconfined drainage ditch exiting into drainage channel. Note, this is not the failing section of drainage channel.

**Southern border of property drainage channel, parallel to Ainaola Drive.**



**EXHIBIT A**



Failing wall section  
of drainage channel.



**Failing wall section within Drainage Channel.**